

# MONTHLY MEMBERSHIP PROGRESS REPORT

LOCATION INDIA

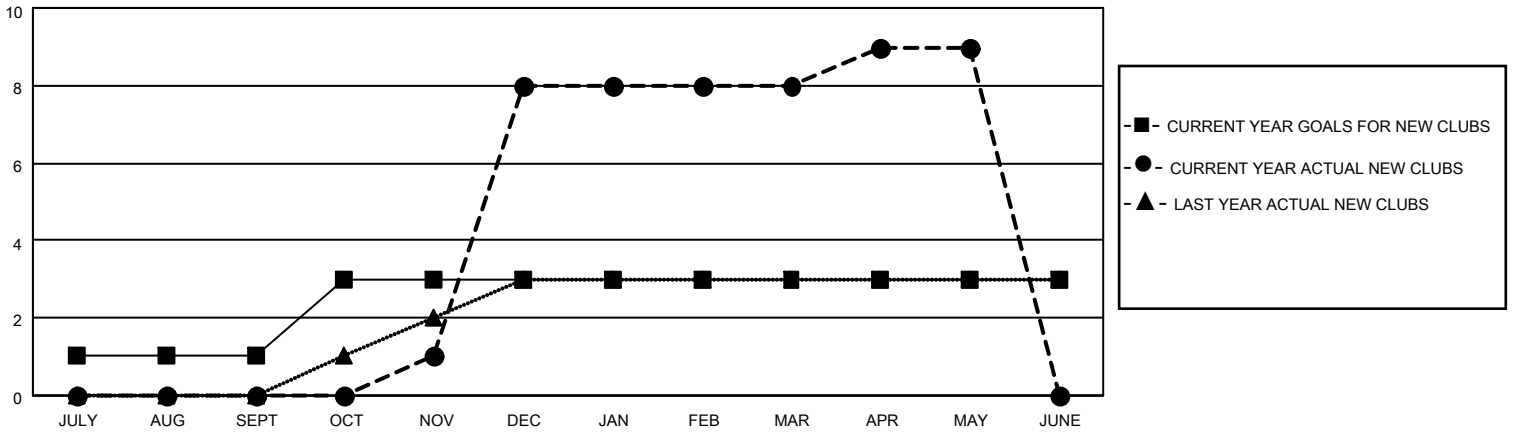
District 316 J

Results as of: 5/31/2021

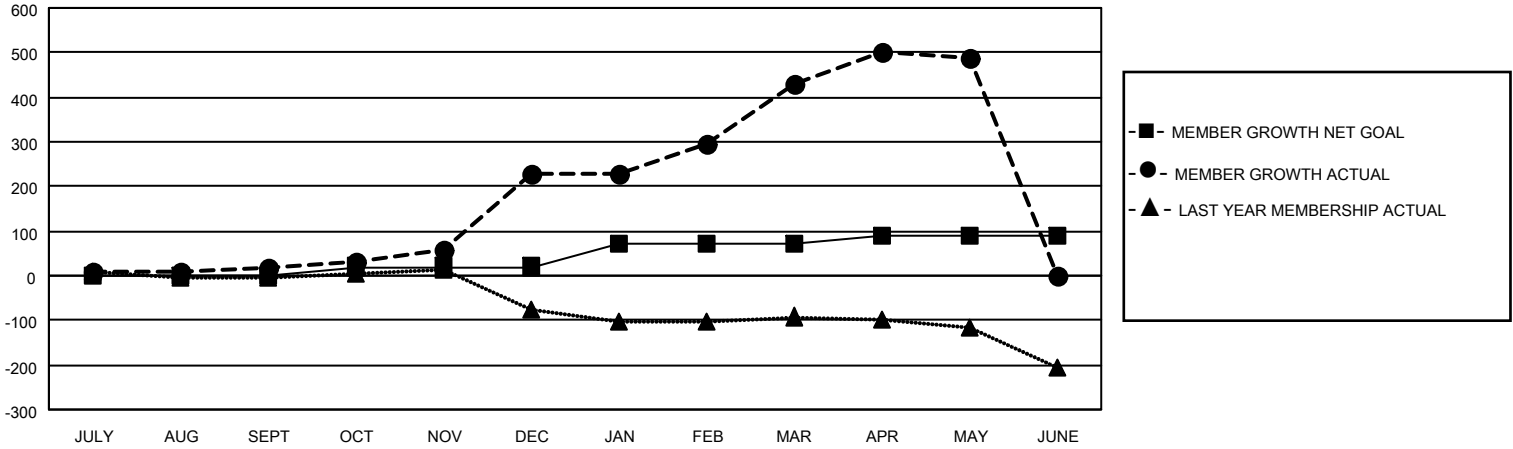
Clubs			
RESULTS FOR 2020-2021			
QUARTER	NEW CLUB GOAL	NEW CLUBS	DROPPED CLUBS
JULY/AUG/SEPT	1	0	0
OCT/NOV/DEC	2	8	0
JAN/FEB/MAR	0	0	2
APR/MAY/JUNE	0	1	0

Members			
RESULTS FOR 2020-2021			
QUARTER	MEMBER GROWTH NET GOAL	MEMBER GROWTH ACTUAL	DROPPED MEMBERS ACTUAL (including transfers)
JULY/AUG/SEPT	0	39	19
OCT/NOV/DEC	20	275	63
JAN/FEB/MAR	50	256	46
APR/MAY/JUNE	20	109	49

**GOALS AND ACTUAL NEW CLUBS CUMULATIVE**



**GOALS AND ACTUAL MEMBERS CUMULATIVE**



DROPPED CLUBS: 2	36 CLUBS OF 54 ADDED 1 OR MORE NEW MEMBERS	<u>GENDER DISTRIBUTION</u>
<u>DROPPED MEMBERS</u>		MALE            1,780 (89.72%)
DECEASED            25		FEMALE        204 (10.28%)
CLUB CANCELLED    30	<a href="#">CLICK HERE FOR CUMULATIVE MEMBERSHIP DATA</a>	TOTAL FAMILY UNIT MEMBERS            495
OTHER                122		FAMILY MEMBERS PAYING HALF DUES            313
<b>TOTAL                177</b>		